

Sedimentbodenbewohner

Phytobenthos

Makrophyten

Seegräser



Posidonia oceanica



Cymodocea nodosa



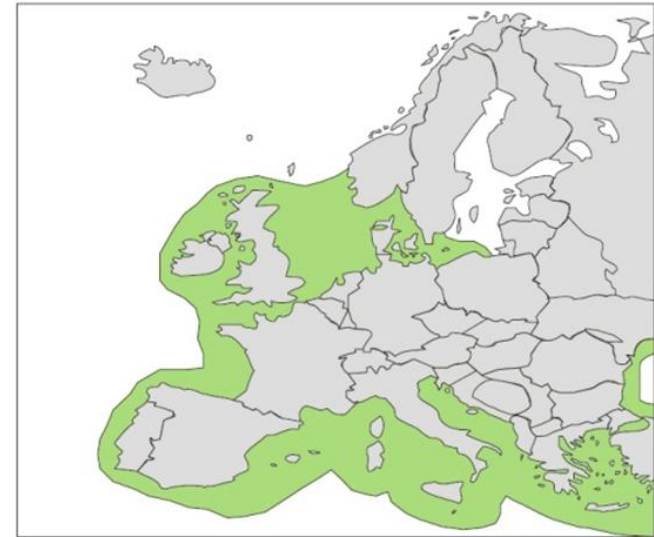
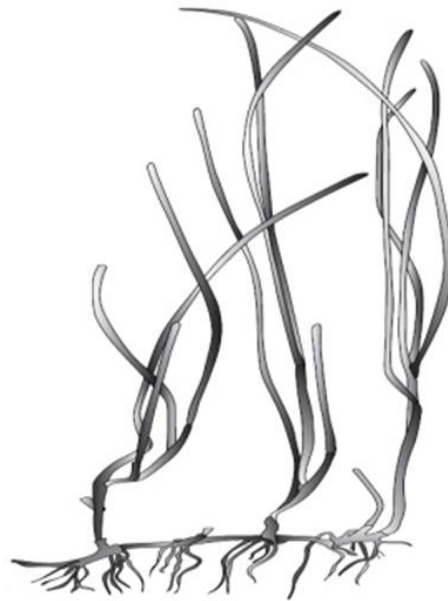
Zostera marina



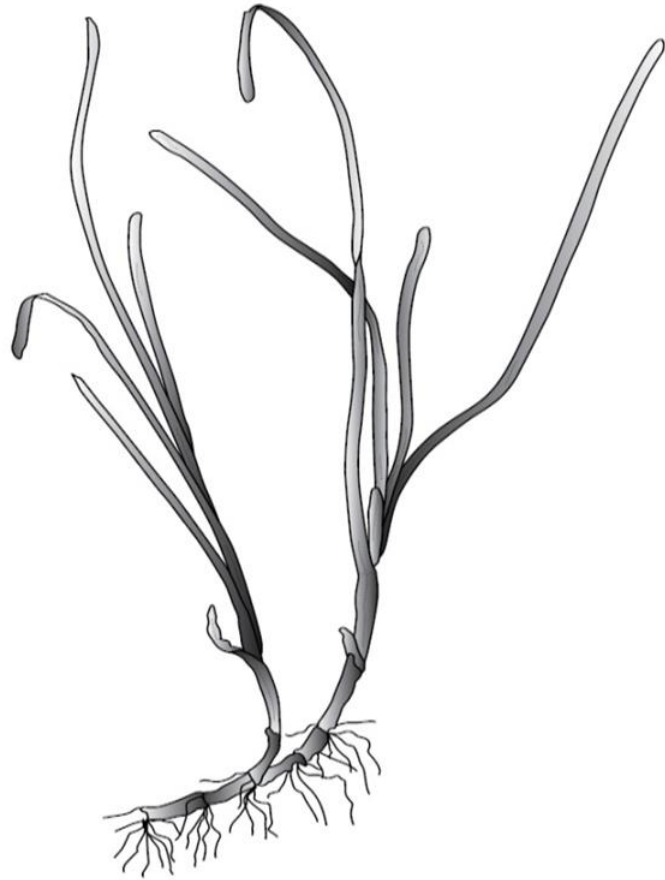
Zostera noltii



Zostera noltii



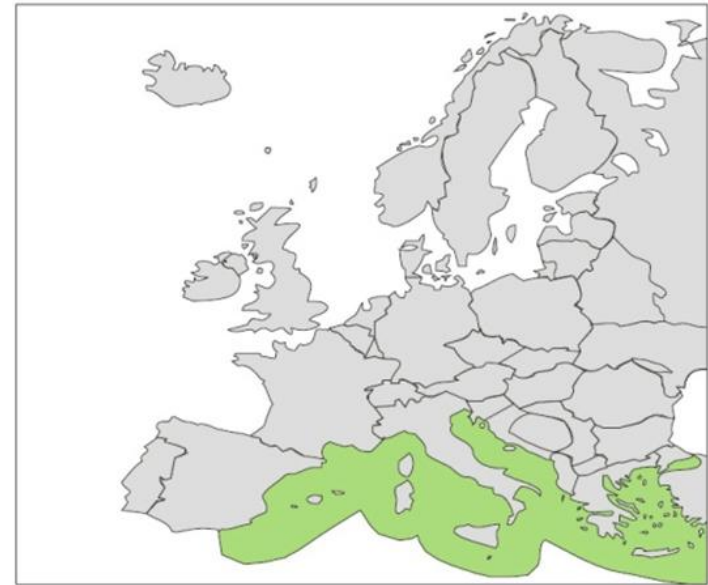
Zostera marina

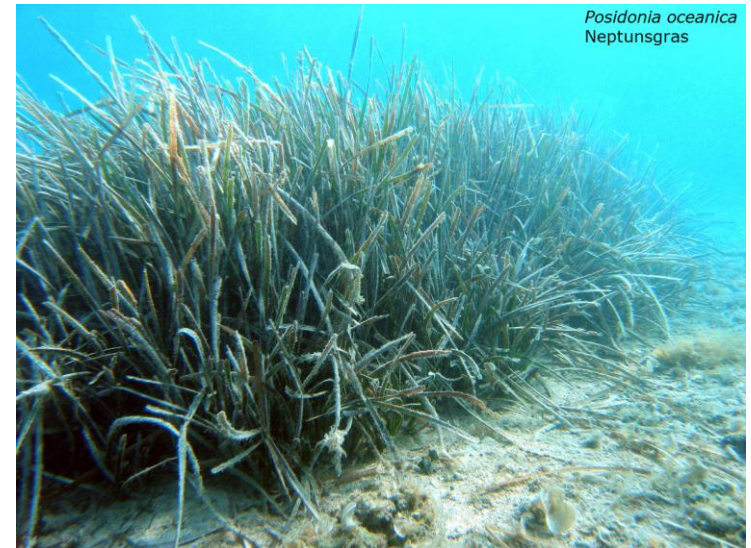


Cymodocea nodosa



Posidonia oceanica





Sedimentbodenbewohner

Phytobenthos

Makrophyten

Makroalgen:

-*Caulerpa*

-und v.a.

ephemere Makroalgen
die auf Steinchen und
Muschelschalen kurzfristig
aufwachsen

Caulerpa taxifolia



Foto Rachel Woodfield



Caulerpa prolifera

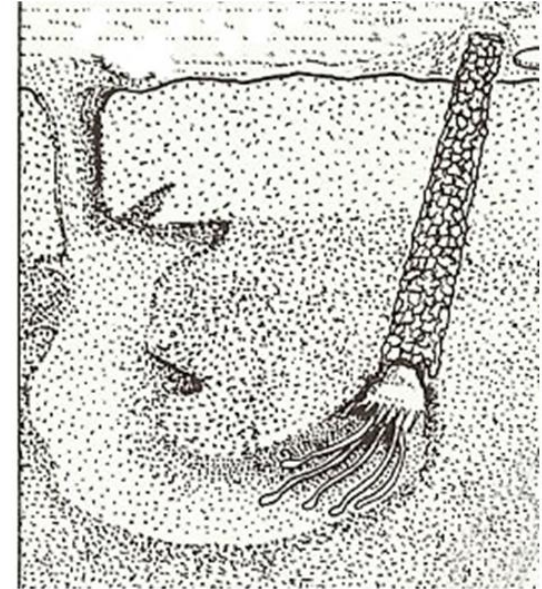


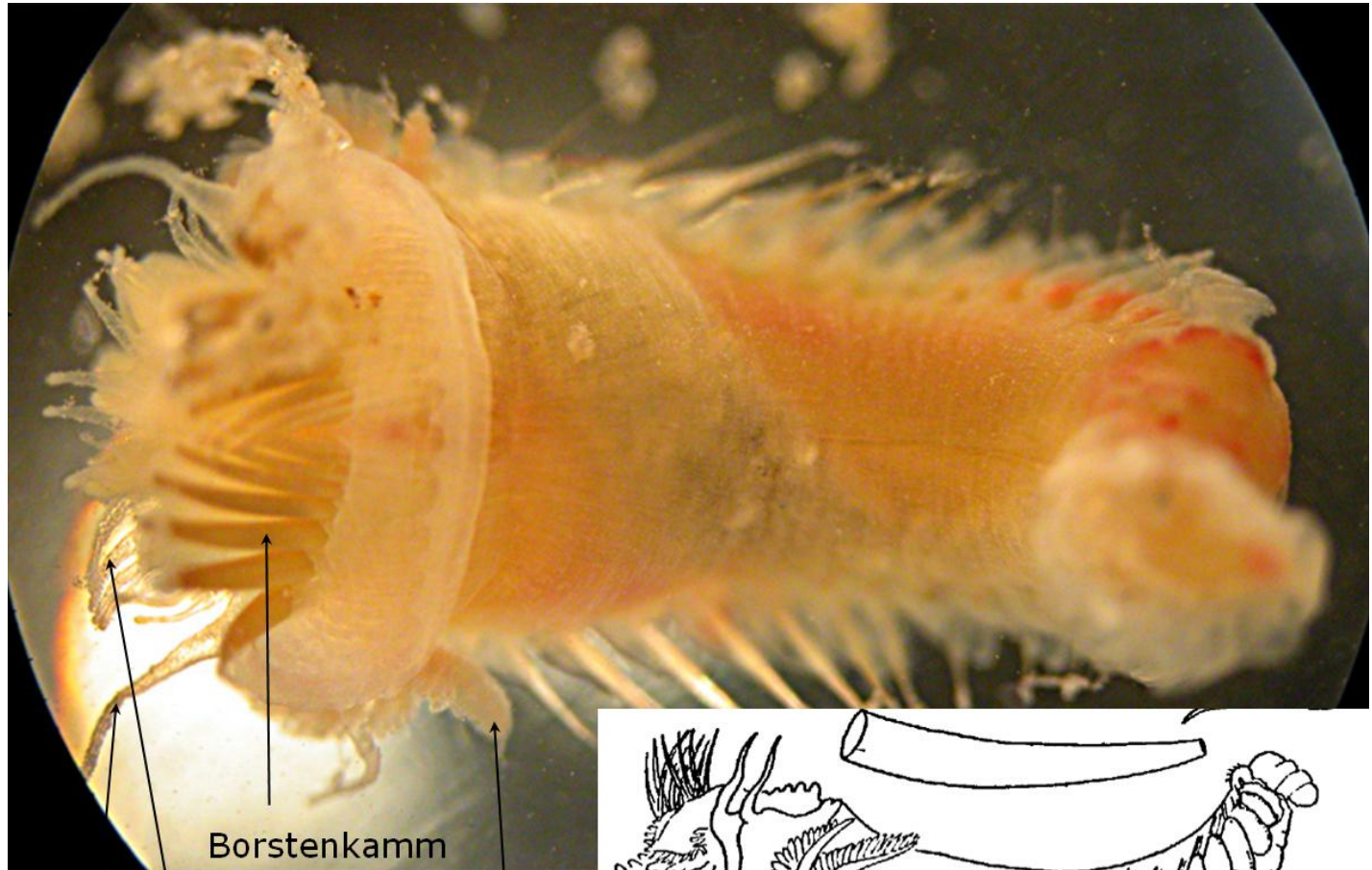
Sedimentbodenbewohner **Zoobenthos**

Makrozoobenthos - POLYCHAETA

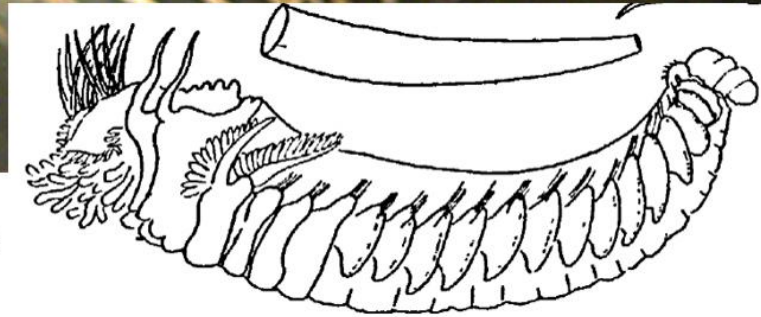


aus R.Hofrichter Mittelmeer BdII/1 S124



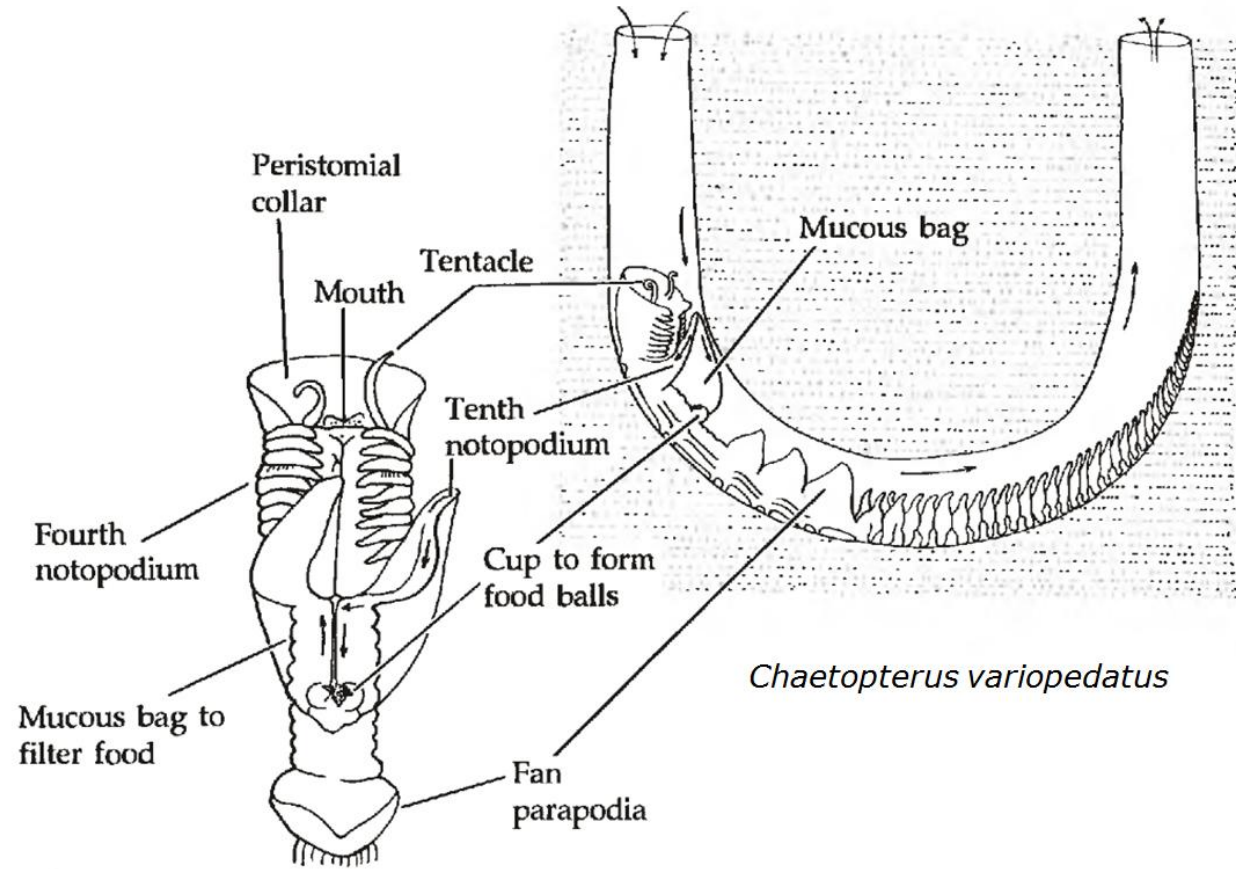


Fühler
Mundtentakel
Borstenkamm
Kieme



Sedimentbodenbewohner **Zoobenthos**

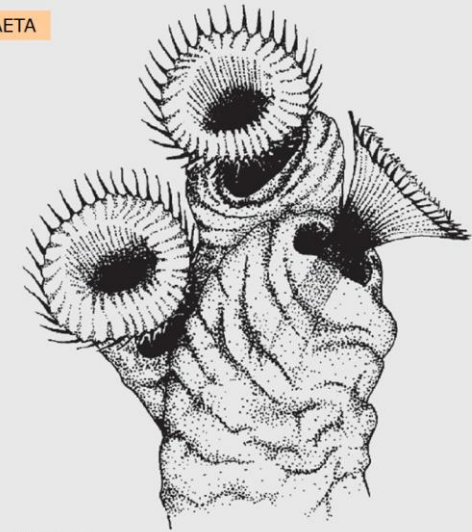
Makrozoobenthos - POLYCHAETA





Sedimentbodenbewohner Zoobenthos

Makrozoobenthos - POLYCHAETA



Schlicksabelle *Myxicola infundibulum*



Schlicksabelle *Myxicola infundibulum*

